

**Sugar Mill Park South:** above: views east towards Hospital (yellow arrow); and below: panorama view north to east (black arrow).







Above: panorama east along drain (left), through to south with drain visible to the right (south-west), from north boundary of **Sugar Mill South** (yellow arrow).  
 Below: panorama northwest from east boundary of Sugar Mill South right next to Hospital site (black arrow).







Views north along the track through the rainforest linking Sugar Mill North and South.



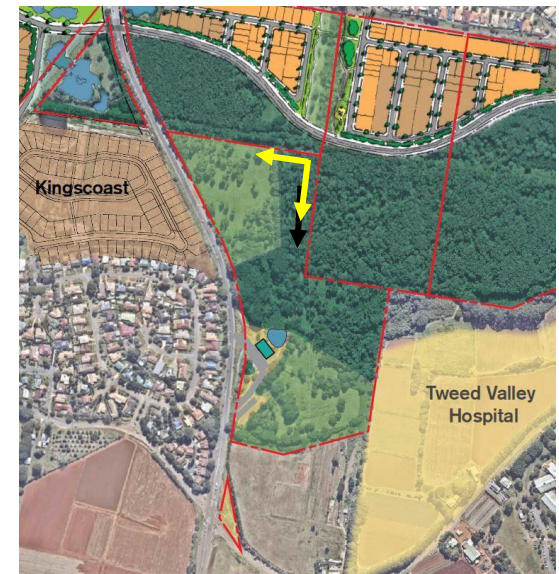




### Sugar Mill North

Above: panorama south through the rainforest and west to Tweed Coast Road (yellow arrow).

Left: view south through the rainforest with drain to the left (black arrow).





### Sugar Mill North.

Left: view southwest from SE corner towards TCRd (black arrow)

Below: view southeast from north boundary next to drain, away from TCRd (yellow arrow)







### Sugar Mill Park Track

Views along the track through the rainforest to the west of the drain.  
All looking north except bottom right photo which looks south from the northern end of the track ie the north-east corner of the Northern Sugar Mill Park.







Left: view south towards the southern end of the rainforest track, i.e. close to the northern end of Sugar Mill Park south.

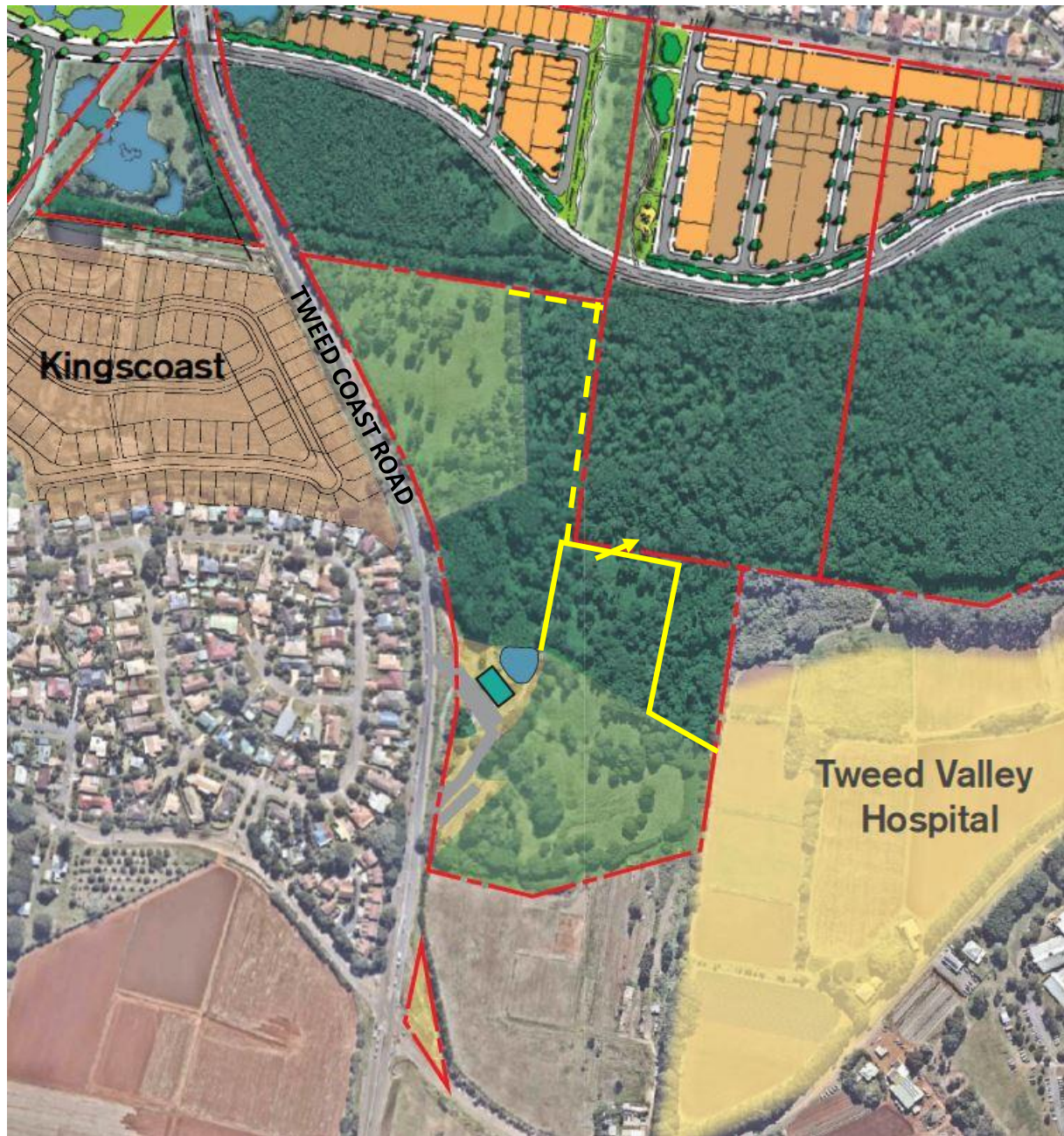
Below: open day walk for local residents along Sugar Mill rainforest walk.



Left: taking a photo looking north along the rainforest track.







Left:  
Dashed yellow line –rainforest  
track next to drains

Solid yellow line - extension of  
Sugar Mill Park south, west to  
west edge of track;  
north to drain at northern end of  
grassland area



Above and below: looking north  
over drain at northern end of Sugar  
Mill south into conservation area  
(yellow arrow)

